

Title	Construction and high cytoplasmic expression of a tumoricidal single-chain antibody against hepatocellular carcinoma.
Author(s)	Sandee, Duanpen; Tungpradabkul, Sumalee; Tsukio, Manae; Imanaka, Tadayuki; Takagi, Masahiro
Citation	BMC Biotechnology, 2(article no.16)
Issue Date	2002-09-12
Type	Journal Article
Text version	publisher
URL	<a href="http://hdl.handle.net/10119/8548">http://hdl.handle.net/10119/8548</a>
Rights	BMC Biotechnology 2002, 2:16 This article is available from: <a href="http://www.biomedcentral.com/1472-6750/2/16">http://www.biomedcentral.com/1472-6750/2/16</a> c 2002 Sandee et al; licensee BioMed Central Ltd. This article is published in Open Access: verbatim copying and redistribution of this article are permitted in all media for any non-commercial purpose, provided this notice is preserved along with the article's original URL.
Description	



Research article

## Construction and high cytoplasmic expression of a tumoricidal single-chain antibody against hepatocellular carcinoma

Duanpen Sandee<sup>1</sup>, Sumalee Tungpradabkul<sup>2</sup>, Manae Tsukio<sup>1</sup>, Tadayuki Imanaka<sup>3</sup> and Masahiro Takagi\*<sup>4</sup>

Address: <sup>1</sup>Department of Biotechnology, Graduate school of Engineering, Osaka University, Suita, Osaka 565-0871, Japan, <sup>2</sup>Department of Biochemistry, Faculty of Science, Mahidol University, Bangkok 10400, Thailand, <sup>3</sup>Department of Synthetic Chemistry and Biological Chemistry, Graduate School of Engineering, Kyoto University, Sakyo-ku, Kyoto 606-8501, Japan and <sup>4</sup>School of Materials Science, Japan Advanced Institute of Science and Technology, Ishikawa 923-1292, Japan

E-mail: Duanpen Sandee - duanpensandee@hotmail.com; Sumalee Tungpradabkul - scstp@mahidol.ac.th; Manae Tsukio - manae-yamaguchi@aist.go.jp; Tadayuki Imanaka - imanaka@sbchem.kyoto-u.ac.jp; Masahiro Takagi\* - takagi@jaist.ac.jp

\*Corresponding author

Published: 12 September 2002

Received: 15 May 2002

BMC Biotechnology 2002, 2:16

Accepted: 12 September 2002

This article is available from: <http://www.biomedcentral.com/1472-6750/2/16>

© 2002 Sandee et al; licensee BioMed Central Ltd. This article is published in Open Access: verbatim copying and redistribution of this article are permitted in all media for any non-commercial purpose, provided this notice is preserved along with the article's original URL.

**Keywords:** Single-chain Fv (scFv), Hepatocellular carcinoma (HCC), Bacterial expression, Inclusion body

### Abstract

**Background:** Hep27 monoclonal (Hep27 Mab) is an antibody against hepatocellular carcinoma. Hep27 Mab itself can inhibit the growth of a hepatocellular carcinoma cell line (HCC-S102). We attempted to produce a single-chain fragment (scFv), a small fragment containing an antigen-binding site of Hep27 Mab, by using DNA-recombinant techniques.

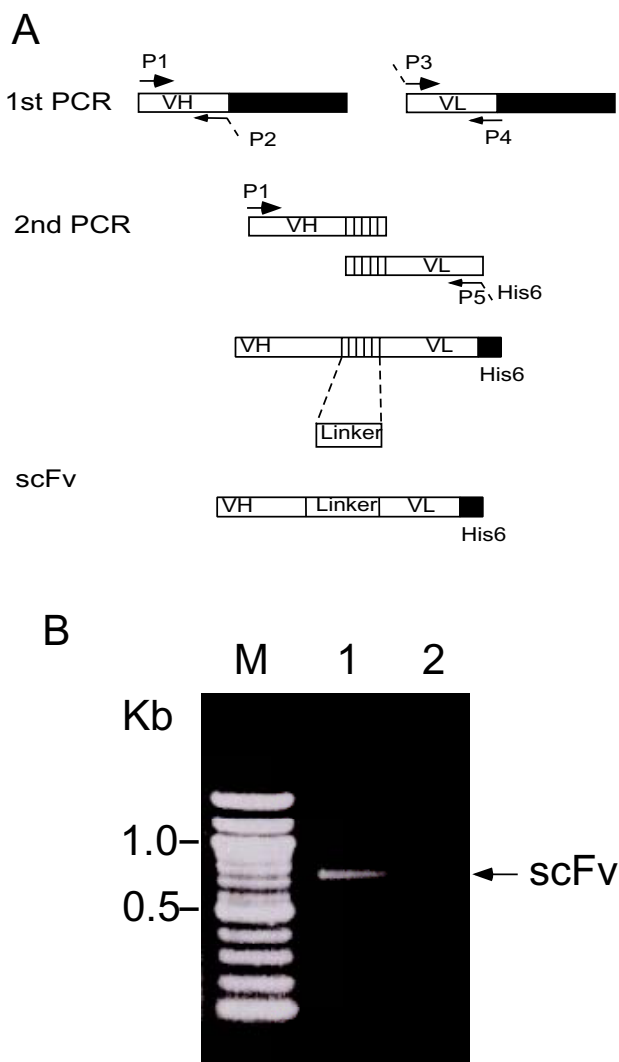
**Results:** The sequences encoding the variable regions of heavy ( $V_H$ ) and light ( $V_L$ ) chains of a murine Hep27 Mab were linked together by a linker peptide  $(Gly_4Ser)_3$  and tagged with a hexahistidine at the C-terminal; the resultant DNA construct was expressed in *E. coli* as an insoluble protein. The denatured scFv was refolded and purified by immobilized metal ion affinity chromatography (12 mg/l with a molecular weight of 27 kDa). Hep27scFv exhibited a tumoricidal activity against the HCC-S102 cell as its parental antibody (Hep27 Mab).

**Conclusion:** This scFv may be a potential candidate for a targeting agent in HCC immunodiagnosis or immunotherapy.

### Background

Hep27 Mab is a monoclonal antibody raised against a hepatocellular carcinoma cell line (HCC-S102). In a previous study, Hep27 Mab was identified as an anti-oncogene-developmental antigen type (ODA) since it interacted not only with HCC but also with normal fetal and newborn livers. No interaction was observed in normal adult livers. In addition, it reacted with the synthetic carbohydrate an-

tigen of glycolipid containing a mucin core unit. Moreover, as determined by FACS, the binding activity of Hep27 Mab to HCC cells treated with PDMP (1-phenyl-2-decanoylamino-3-morpholino-1-propanol, an inhibitor of glycolipid synthesis) was decreased; indicating that epitope recognized by Hep27 Mab should be a glycolipid. Hep27 Mab alone inhibits the growth of an HCC-S102 cell line (65% viability) without effector cells [1]. The



**Figure 1**  
**A construction of scFv.** (A): Schematic representation of scFv gene construction using overlapping PCR. The variable regions of heavy chain (V<sub>H</sub>) and light chain (V<sub>L</sub>) were amplified separately by the 1<sup>st</sup> PCR. The V<sub>H</sub> and V<sub>L</sub> segments were assembled by the second overlap PCR to generate the scFv fragment. (B): Agarose gel analysis of PCR product of scFv. Lane M, DNA marker (100 bp ladder); lane 1, the scFv PCR products; lane 2, negative control (without templates).

mechanism of tumor suppression is not known exactly, but it may concern the regulation of tumor cell proliferation by binding Hep27 Mab to the growth factor receptor on the cell. This Mab may be potentially useful for human hepatocellular carcinoma diagnosis and therapy. However, the use of murine monoclonal antibodies for human tumor diagnosis and therapy is limited by the human anti-mouse antibody (HAMA) response. These limitations may be overcome by a genetically engineered single-chain

antibody fragment (scFv) lacking an Fc domain [2]. These small scFvs consist of a variable heavy chain (V<sub>H</sub>) and a variable light chain (V<sub>L</sub>) linked together by a flexible polypeptide linker [3]. These scFv molecules retain the original antigen-binding site and, therefore, represent valuable molecules for targeted delivery of drugs, toxins, or radioisotopes to a tumor site. Furthermore, scFv can be produced on a large scale in bacteria or yeast [4,5], and it can be manipulated by genetic engineering to form anti-tumor fusion proteins with additional effector functions [6,7].

This article reports our work about construction, expression, purification of a single-chain antibody fragment (scFv), and characterization its biological function against a human hepatocellular carcinoma cell line.

## Results

### Construction and expression of scFv

By using an assembly PCR that is described in the methods section, the fragments of V<sub>H</sub> and V<sub>L</sub> were assembled together, yielding a fusion fragment encoding V<sub>H</sub>-V<sub>L</sub> with a histidine tag at the C-terminal end (Figure 1B). They then were cloned into the expression vector, pET8C as an *NcoI* - *Bpu*1102I fragment. After linker insertion, positive clones consisting of V<sub>H</sub>-linker-V<sub>L</sub> were selected and used to perform DNA sequencing. A deduced amino acid sequence of V<sub>H</sub> and V<sub>L</sub> connected by a linker peptide, (GGGGS)<sub>3</sub>, is shown in Figure 2.

The over expression of scFv was induced by adding IPTG to the final concentration of 1 mM. The total cells, including both soluble and insoluble fractions, were analyzed by SDS-PAGE and immunoblotting. As shown in Figure 3, an scFv-His fusion protein of about 27 kDa was strongly expressed. The results showed that most of the scFv was expressed as insoluble inclusion bodies. The scFv could not be detected in a soluble fraction or in a culture medium. Without IPTG induction, no scFv was detected even in a whole cell fraction.

### Refolding and purification of scFv

The purified Hep27scFv was analyzed by SDS-PAGE (Figure 4A) and immunoblotting (Figure 4B). The scFv appeared as a single homogenous 27-kDa band. For this experiment, a purified scFv yielded 12 mg/l of *E. coli* cell culture. We analyzed the molecular weight of purified scFv by using a superdex 75 column and comparing the results to standard molecules. As seen in Figure 5, the isolated scFv consisted mainly of a monomeric structure (approximately 27 kDa) and small amounts of aggregated scFv.

**VH** *NcoI*

ACGTCCATGGTCCAGCTGCTCGAGTCAGGGGGGGGCTTGGTGCAGCCTGGAGGGTCCCGG  
 T S **M** V Q L L E S G G G L V Q P G G S R

AAACTCTCCTGTGCAGCCTCTGGATTCACTTTCAGTAGCTTTGGAATGCACTGGGTTTCGT  
 K L S C A A S G F T F S **S F G M H** W V R

CAGGCTCCAGAGAAGGGGCTGGAGTGGGTCGCAT**TACATCAGTAGTGGCAGTAGTTCATC**  
 Q A P E K G L E W V A **Y I S S G S S S I**

**TACTATGCAGACACAGTGAAGGGCCGATTCA**CCATCTCCAGAGACAATCCCAAGAACACC  
**Y Y A D T V K G R F T I S R D N P K N T**

CTGTTCTCCTGCAAATGACCAGTCTAAGGTCTGAGGACACGGCCATGTATTACTGTGCAAGA  
 L F L Q M T S L R S E D T A M Y Y C A R

**Linker**

**TCGGGGTTACTTCCATTTGACTACTGGGGCCAAGGCACCTCTCTCACAGTCTCGAGC**GGT  
**S G L L P F D Y W G Q G T S L T V S S G**

**VL**

GGCGGTGGCTCGGGCGGTGGTGGGTCGGGTGGCGCGGATCGGAACTAGTGATGACCCAG  
 G G G S G G G G S G G G G S E L V M T Q

ACTCCAGCTTCTTTGGCTGTGTCTCTAGGGCAGAGAGCCACCATCTCCTGCAGAGCCAGT  
 T P A S L A V S L G Q R A T I S C R A S

**GAAAGTGTGAATATTATGGCACAAGTTTAATGCAGTGGTACCAACAGAAACCAGGACAG**  
**E S V E Y Y G T S L M Q W Y Q Q K P G Q**

CCACCCAAACTCCTCATCTAT**GTTGCATCCAACGTAGAAT**CTGGGGTCCCTGCCAGGTTT  
 P P K L L I Y V A S N V E S G V P A R F

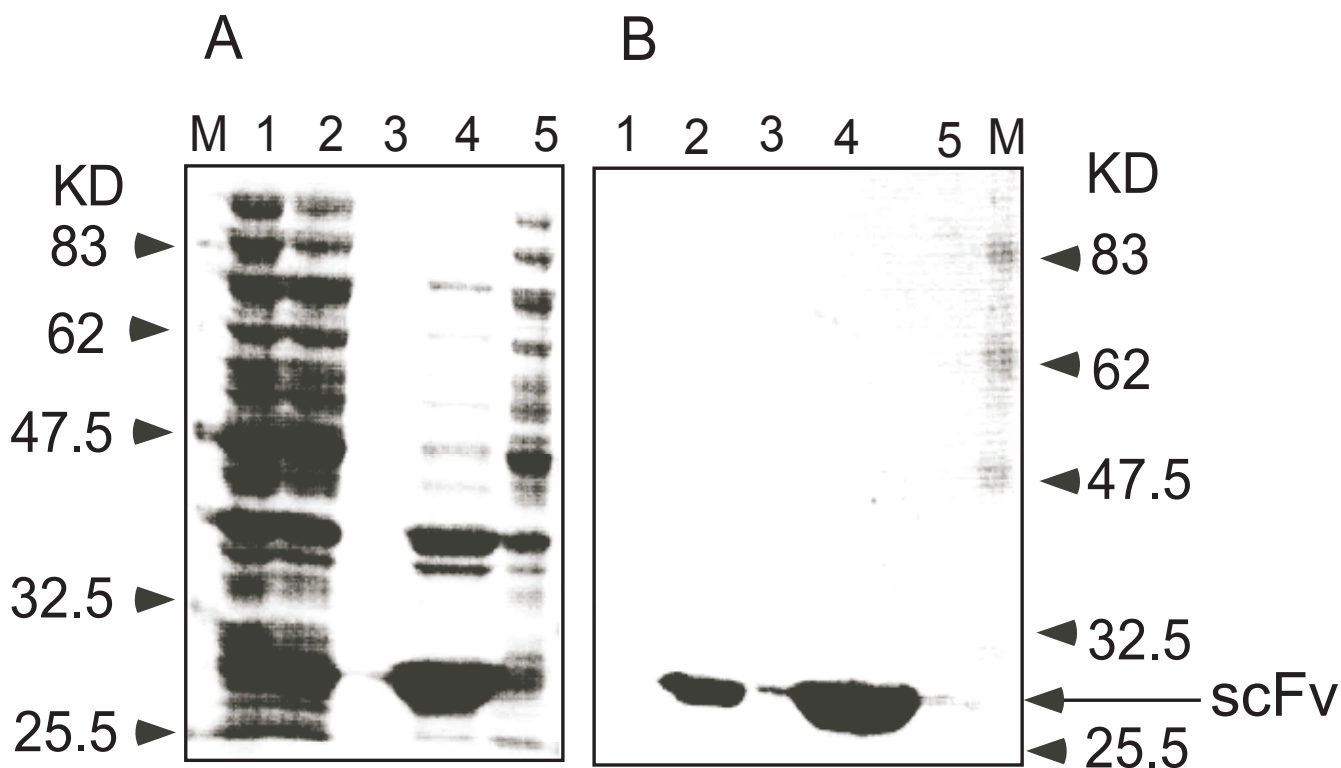
AGTGGCAGTGGGTCTGGGACAGACTTCAGCCTCAACATCCATCCTGTGGAGGAGGAT**GAT**  
 S G S G S G T D F S L N I H P V E E D D

**ATTGCAATGTATTTCTGTGTCAGCAAAGTAGGAAGTTCCGTGGACGTTCCGGTGGAGGCACC**  
**I A M Y F C Q Q S R K V P W T F G G G T**

*Bpu1102I*

AAGCTGAAATCAAACATCATCATCATCATTAATGAGCTGAGC  
 K L E I K H H H H H H \* \* A E

**Figure 2**  
**Nucleotide and deduced amino acid sequences of the constructed Hep27scFv containing V<sub>H</sub>, linker peptide, and V<sub>L</sub>.** The CDR regions are indicated by bold characters. The linker peptide is marked in box. Underlining indicates the restriction enzyme sites used for cloning the Hep27scFv gene.



**Figure 3**

**Protein fractionation analysis of scFv.** (A): 12% SDS-PAGE of the gel was stained with 0.25% Coomassie Brilliant Blue R-250. (B): Western blot. A fusion protein was probed with mouse anti-His Ab, followed by goat anti-mouse alkaline phosphatase conjugated Ab. Color was developed by using NBT/BCIP alkaline phosphatase substrate. Lane M, protein molecular weight marker; lane 1, total cells sample (without IPTG induction); lane 2, total cells sample (under IPTG induction); lane 3, culture supernatant; lane 4, insoluble fraction; lane 5, soluble fraction. The scFv (27 kD) is denoted by an arrow.

#### **The effects of Hep27scFv on HCC-S102 cell proliferation**

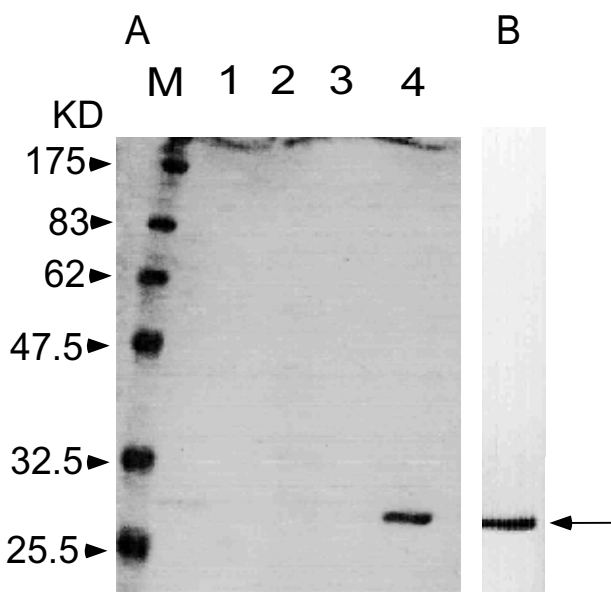
In our previous study [1], we found that the viability of HCC-S102 cells was reduced to 85 %, 83 % and 65 % on the first, second, and third day, respectively, after treatment with 5 µg/ml of Hep27 Mab. No significant change could be found in negative control (HCC-S102 treated with Hep16 Mab, an Ab secreted from hybridoma clone without tumoricidal activity). To investigate whether a single scFv can inhibit tumor cell growth, we treated HCC-S102 with various concentrations of Hep27scFv. The relative numbers of viable cells were then determined; the results are shown in Figure 6. Dose-dependent cytotoxic effects were observed. The HCC-S102 cell proliferation rate was reduced to 68% when the cells were treated with 20 µg/ml of Hep27scFv for 72 h, but it was not changed in negative control (0 µg/ml Hep27scFv). Moreover, anti-KOD DNA polymerase scFv (βG1scFv) at a concentration of 0–20 µg/ml also was used as a negative control. The results showed that cancer cell proliferation could not be reduced. This experiment indicated that a refolded and purified Hep27scFv retained a tumoricidal activity against HCC-S102 as its parental antibody, Hep27 Mab.

#### **Discussion**

It has been confirmed that Hep27 Mab recognized a tumor antigen on HCC-S102. Hep27 Mab showed no reactivity to normal liver and low binding activity to HCC-S102 treated with PDMP, an inhibitor of glycolipid synthesis. Furthermore, Hep27 Mab alone can inhibit tumor cell growth [1].

However, murine antibodies, as foreign proteins, may elicit immune reactions that reduce or eliminate their therapeutic efficacy and/or evoke allergic or hypersensitivity reactions in patients. Therefore, we attempted to produce Hep27scFv that may be useful in the immunodiagnosis and immunotherapy of HCC.

In this study, we constructed a single-chain antibody fragment, Hep27scFv. It consisted of the variable domains of the heavy ( $V_H$ ) and light ( $V_L$ ) chains. The two variable domains are linked via a flexible peptide,  $(GGGGS)_3$ , to improve the stability of the Fv domains. A variety of linkers with different lengths and sequences has been used [3,8–10]. Previous studies indicated that the lengths and se-



**Figure 4**  
**SDS-PAGE and immunoblotting analysis of purified scFv.** (A); SDS-PAGE stained with CBB. Lane M, protein molecular weight marker; lane 1, soluble proteins after refolding; lane 2, Flow-through fraction; lane 3, washed fraction; lane 4, eluted fraction. (B): Immunoblotting of purified Hep27scFv stained with mouse anti-His antibody (IgG) and alkaline phosphatase-conjugated anti-mouse IgG. Relative molecular mass (kDa) of standard proteins is shown on the left.

quences of the linker peptide could significantly affect the properties of scFvs [11–14]. A short linker (0–10 residues) hinders dimerization [13]. The most widely used linker designs have sequences consisting primarily of stretches of glycine (G) and serine (S) residues. Hydrophilic properties of serine allow hydrogen bonding to the solvent, and glycines provide the necessary flexibility [11]. To facilitate protein purification, the six-histidine residues were fused at the C-terminal of scFv. Most of the scFv proteins were expressed as inclusion bodies that were solubilized in buffer containing 6 M GuHCl and refolded by step-wise dilution of GuHCl to yield 12 mg/l with a molecular weight about 27 kDa. These results were consistent with the theoretical calculations. However, the gel filtration profiles of purified Hep27scFv consisted of a monomeric form with a molecular size of 27 kDa and a small amount of non-specific aggregation products that also have been reported by other groups [15–18]. Recently, Kurokawa et al. reported overexpression of eukaryotic proteins containing multiple disulfide bonds by coexpression with Dsb protein [19,20]. Based on this strategy, it is a challenge to express scFv with disulfide bonds in a soluble form in *E. coli*, so that scFv may directly be purified, characterized, and employed without a protein refolding step.

We are now trying to express an active soluble protein of Hep27scFv by using the Dsb coexpression system.

The results of a cell proliferation assay showed that Hep27scFv has the potential to inhibit HCC-S102 cell growth: there was a 32% reduction of cell proliferation rate at a concentration of 20  $\mu\text{g/ml}$  of refolded and purified Hep27scFv. No change was observed in negative control (0  $\mu\text{g/ml}$  Hep27scFv) and the  $\beta\text{G1scFv}$ -treated cells, indicating that other types of scFv could not induce HCC-S102 cell growth inhibition. Only Hep27scFv showed an effect on tumor cell growth. These results also imply that *in vitro* refolding yields a correct conformation of scFv and that an incorrect form of refolded scFv will lead to protein aggregation without biological function.

Although the mechanism of cancer cell death mediated by Mab or scFv has not been characterized yet, it may be involved in the binding between Mab or scFv and the growth factor receptor on tumor cells [21–23]. Although we did not study how scFv works on the same cells without tumor antigen such as normal liver tissue, our previous study showed Hep27 Mab reacted against HCC-S102, fetal and newborn livers but not against normal adult livers. In addition, the reactivity of Hep27 Mab against HCC-S102 treated with PDMP, an inhibitor of glycolipid synthesis, was decreased compared to untreated cells [1]. Therefore, we assumed that Hep27scFv consisting of a nucleotide sequence encoding for the variable region of its parental antibody (Hep27 Mab) would not recognize normal liver.

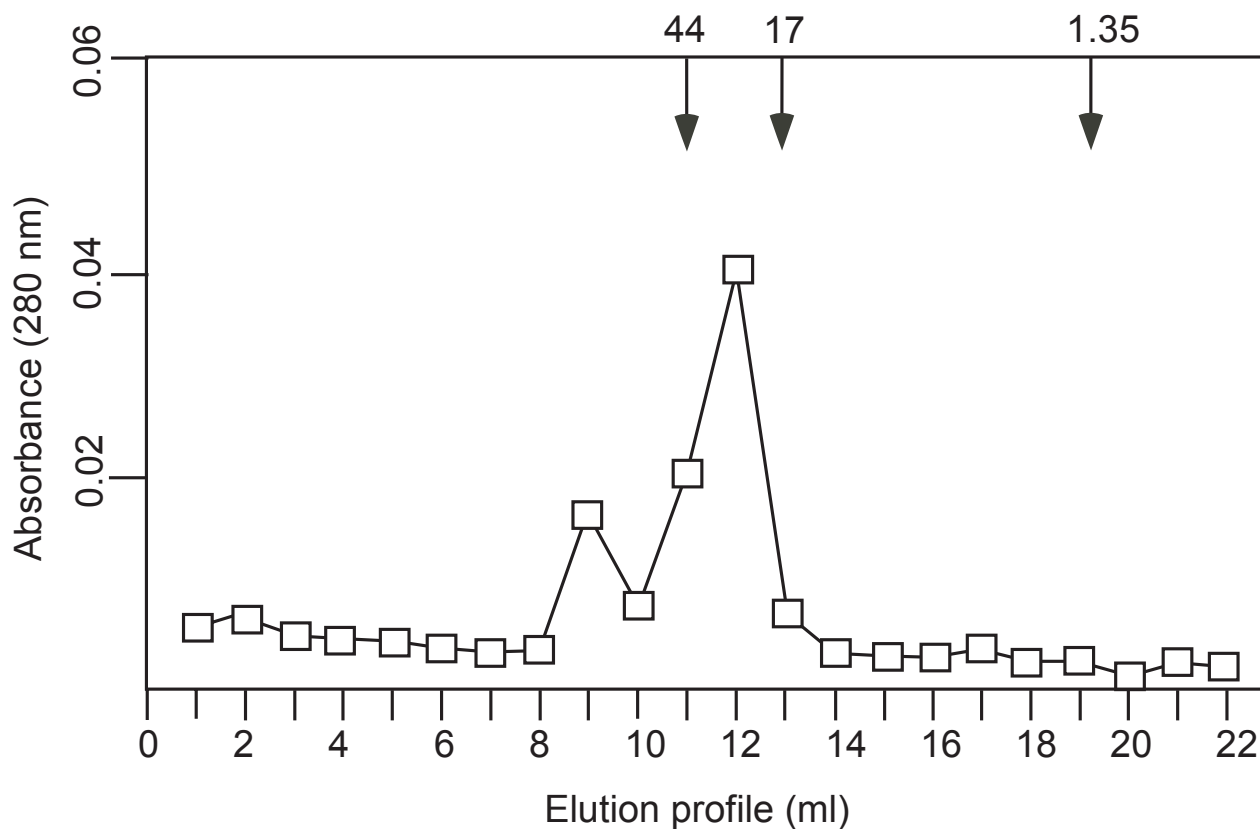
## Conclusions

In view of our results, an active Hep27scFv could be produced in *E. coli* with high yield. Primary characterization of the biological activity indicated that Hep27scFv showed a potential tumoricidal activity against the hepatocellular carcinoma cell line (HCC-S102) as its parental antibody (Hep27 Mab). Therefore, it likely that Hep27scFv has the potential to be a useful agent for immunodiagnostic and immunotherapeutic applications against hepatocellular carcinoma.

## Methods

### Construction of expression vector

To generate the scFv, the variable regions of heavy chain and light chain encoding for Hep27 Mab obtained from our previous study [1] were amplified separately using specific primers. Heavy chain and light chain variable fragments were fused together by using complementary primer for the second PCR. To facilitate the purification step, the 3' end primer of light chain was designed for histidine residues. A negative control experiment was performed without templates. Fusion fragments were then ligated into pET8C. The complementary primer region of



**Figure 5**

**Gel filtration profiles.** Gel filtration of purified and refolded Hep27scFv was performed on Superdex 75 column connected to a FPLC system pre-equilibrated with PBS. Sample volume and flow rate were 200  $\mu$ l and 0.5 ml/min, respectively. Molecular mass was calibrated with ovalbumin (44 kDa), myoglobin (17 kDa), and vitamin B12 (1.35 kDa).

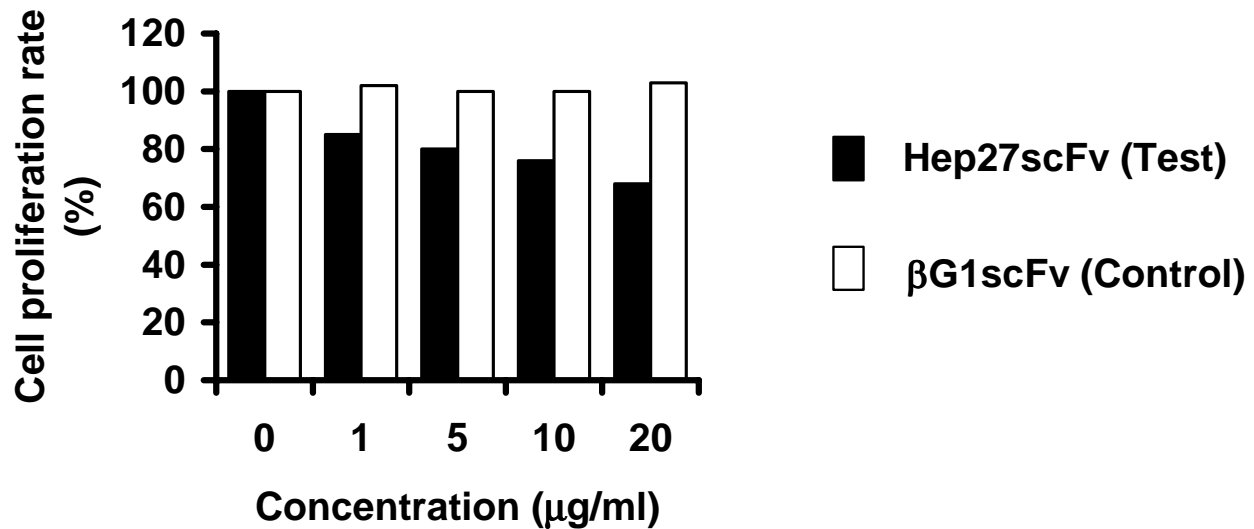
$V_H$ - $V_L$  fusion fragments was then replaced by a linker peptide consisting of three units of Gly<sub>4</sub>Ser [3] to obtain a single chain fragment,  $V_H$ -linker- $V_L$ , Hep27scFv (Figure 1).

#### Expression and protein purification

The vector pET8C-Hep27scFv, after being confirmed by DNA sequencing, was transformed into BL21 (DE3). At a mid-log growth phase, the Hep27scFv expression was induced by the addition of isopropyl- $\beta$ -D-thiogalactopyranoside (IPTG) to a final concentration of 1 mM, and cells were further cultivated for 4 hr. The cells were harvested by centrifugation at 12,000 g and resuspended in 1/2 volume of 30 mM Tris-HCl (pH8.0), 30 mM NaCl. Following the disruption of the cell through sonication, the pellets were dissolved in 1/20 volume of 2% Triton X-100. Then the solution was sonicated and incubated at 4°C for 16 hr. The soluble proteins were solubilized in a Triton X-100 solution, and the pellets (inclusion bodies) were obtained after centrifugation at 14,000 g for 15 min. The insoluble protein was re-natured according to the methods of Tsumoto et al. [24]. Briefly, the pellets were washed twice with a 30 mM Tris-HCl (pH8.0), 30 mM NaCl buffer.

They were then solubilized in 50 mM Tris-HCl pH 8.0 containing 6 M Guanidine hydrochloride (GuHCl), 200 mM NaCl, 1 mM EDTA, 10 mM 2-mercaptoethanol (final concentration of scFv = 7.5  $\mu$ M) and incubated overnight at 4°C. After removal of the mercaptoethanol by dialysis against the same buffer without mercaptoethanol, GuHCl was removed by dialysis against 100 mM Tris-HCl pH8.0 containing 3 M GuHCl and 200 mM NaCl, followed by dialysis against the same buffer with step-wise reduction in the GuHCl concentration (2,1,0.5, and 0 M). Each dialysis was performed overnight. On a 1-M stage, 50-fold molar excess of glutathione (GSSG) and 400 mM L-Arginine were added to the dialysis buffer. After dialysis, the insoluble fraction containing insoluble *E. coli* proteins and misfolded aggregates scFv was removed by centrifugation at 24,000 g for 30 min and then filtrated before the purification step.

For protein purification, soluble proteins were dialyzed against buffer A (0.02 M sodium phosphate buffer, 0.5 M NaCl pH 7.2) and centrifuged before loading into a Cu<sup>2+</sup> chelating column (1 ml) that was equilibrated with buffer



**Figure 6**

**The effect of Hep27scFv on HCC-S102 cell growth in vitro.** HCC-S102 cells were incubated with various concentrations of Hep27scFv for 72 h. Cell proliferation rate was assayed by the MTS method and calculated as described in the methods section. Cell proliferation rate reduced after treatment with various concentrations of scFv in a dose-dependent manner. The rate reduced to 68% with 20 µg/ml of Hep27scFv incubation but did not change either in negative control (0 µg/ml scFv) or in cells treated with βG1scFv.

A. The column was then washed with buffer A containing 25 mM imidazole, and proteins were then eluted with buffer B (0.02 M sodium phosphate buffer, 0.5 M NaCl, 0.5 M imidazole, pH 7.2).

#### Gel filtration

To determine the molecular weight of refolded and purified scFv, we performed gel filtration using a Superdex 75 column (Amersham Pharmacia) connected to an FPLC system and pre-equilibrated with PBS. Molecular mass was calibrated with standard proteins of gel filtration (Biorad). 200 µl of refolded and purified Hep27scFv adjusted to 1 mg/ml was subjected to gel filtration at a flow rate of 0.5 ml/min.

#### Cell proliferation assay

To evaluate the tumoricidal activity of Hep27scFv, we used CellTiter 96A<sub>QUEOUS</sub> Non-Radioactive cell proliferation Assay (Promega). This colorimetric assay employs MTS [3-(4,5-dimethylthiazol-2-yl)-5-(3-carboxymethoxyphenyl)-2-(4-sulfophenyl)-2H-tetra-zolium, inner salt] and electron coupling reagent, phenazine methosulfate (PMS). The MTS assay depends on the activity of mitochondrial dehydrogenase to reduce MTS, and only mitochondria in living cells have that activity. The amount of formazan (reduced product of MTS) produced is proportional to the number of living cells. HCC-S102 cells were

dispensed in a 96-well flat bottom titer plate at a concentration of  $5 \times 10^3$  cell in 100 µl of Dulbecco's modified essential medium (DMEM, life technologies) containing 10% of fetal bovine serum per well. After 4 hr of culture to allow adhesion to the bottom of the wells, the HCC-S102 cells were treated with 0–20 µg/ml of Hep27scFv for 72 hr. Cell proliferation rate was measured after 72 hr incubation by adding 20 µl of a fresh mixture of MTS/PMS solution. The absorbance at 490 nm was measured in a microplate reader as a measure of the relative amount of viable cells in comparison with cells grown in the absence of recombinant proteins. We calculated percent cell proliferation of HCC-S102 by using the following formula:

$$\text{Cell proliferation rate (\%)} = \frac{(\text{Experimental absorbance} - \text{Background absorbance})}{(\text{Control absorbance} - \text{Background absorbance})} \times 100$$

#### Author's contributions

DS carried out the molecular genetic studies of scFv, sequence alignment, scFv expression and also drafted the manuscript. ST performed molecular genetic studies of immunoglobulin genes from hybridoma cells. MT (Tsu-kio) performed biological studies of scFv. TI participated in the design of the study and arrangement of scientific funding. MT (Takagi) conceived of the study, and participated in its design and coordination.



## Acknowledgements

We thank Dr. Robert B. DiGiovanni (JAIST) for helpful comments and critical readings of the manuscript. This work was supported by a grant from the Science and Technology Incubation Program in Advanced Region by JST (Japan Science and Technology Corporation).

## References

- Sandee D, Tungradubkul S, Laohathai K, Punyammalee B, Kohda K, Takagi M, Imanaka T: **Tumor suppressive monoclonal antibody belonging to the V<sub>H</sub> 7183 family directed to the oncodevelopmental carbohydrate antigen on human hepatocellular carcinoma.** *J Biosci Bioeng* 2002, **93**:266-273
- Winter G, Milstein C: **Man-made antibodies.** *Nature* 1991, **349**:293-299
- Huston JS, Mudgett-Hunter M, Tai MS, McCartney J, Warren F, Haber E, Oppermann H: **Protein engineering of single chain Fv analogs and fusion proteins.** *Methods Enzymol* 1991, **203**:46-88
- Milenic DE, Yokota T, Filipula DR, Finkelman MA, Dodd SW, Wood JF, Whitlow M, Snoy P, Schlom J: **Construction, binding properties, metabolism, and tumor targeting of a single-chain Fv derived from the pancarcinoma monoclonal antibody CC49.** *Cancer res* 1991, **51**:6363-6371
- Ridder R, Schmitz R, Legay F, Gram H: **Generating of rabbit monoclonal antibody fragments from combinatorial phage display library and their production in the yeast *Pichia pastoris*.** *Biotechnology* 1995, **13**:255-260
- Eshhar Z, Waks T, Gross G, Schindler DG: **Specific activation and targeting of cytotoxic lymphocytes through chimeric single chains consisting of antibody-binding domains and the  $\gamma$  or  $\zeta$  subunits of the immunoglobulin and T-cell receptors.** *PNAS* 1993, **90**:720-724
- Wels W, Harwerth IM, Mueller M, Groner B, Hynes NE: **Selective inhibition of tumor cell growth by a recombinant single-chain antibody-toxin specific for the erbB-2 receptor.** *Cancer Res* 1992, **52**:6310-6317
- Takkinen K, Laukkanen ML, Sizmman D, Alfthan K, Immonen T, Vanne L, Kaartinen M, Knowles JK, Teeri TT: **An active single-chain antibody containing a cellulase linker domain is secreted by *Escherichia coli*.** *Protein Eng* 1991, **4**:837-841
- Tang Y, Jiang N, Parakh C, Hilvert D: **Selection of linkers for a catalytic single-chain antibody using phage display technology.** *J Biol Chem* 1996, **271**:15682-15686
- Hennecke F, Krebber C, Pluckthun A: **Non-repetitive single-chain Fv linkers selected by selectively infective phage (SIP) technology.** *Protein Eng* 1998, **11**:405-410
- Argos P: **An investigation of oligopeptides linking domains in protein tertiary structures and possible candidates for general gene fusion.** *J Mol Biol* 1990, **211**:943-958
- Desplancq D, King DJ, Lawson AD, Mountain A: **Multimerization behaviour of single chain Fv variants for the tumour-binding antibody B72.3.** *Protein Eng* 1994, **7**:1027-1033
- Holliger P, Prospero T, Winter G: **"Diabodies": small bivalent and bispecific antibody fragments.** *Proc Natl Acad Sci U S A* 1992, **90**:6444-6448
- Raag R, Whitlow M: **Single-chain Fvs.** *FASEB J* 1995, **9**:73-80
- Andrade EV, Albuquerque FC, Moraes LM, Brigido MM, Santos-Silva MA: **Single-chain Fv with Fc fragment of the human IgG1 tag: construction, *Pichia pastoris* expression and antigen binding characterization.** *J Biochem (Tokyo)* 2000, **128**:891-895
- McGregor DP, Molloy PE, Cunningham C, Harris WJ: **Spontaneous assembly of bivalent single chain antibody fragments in *Escherichia coli*.** *Mol Immunol* 1994, **31**:219-226
- Schier R, McCall A, Adams GP, Marshall KW, Merritt H, Yim M, Crawford RS, Weiner LM, Marks C, Marks JD: **Isolation of picomolar affinity anti-c-erbB-2 single-chain Fv by molecular evolution of the complementarity determining regions in the center of the antibody binding site.** *J Mol Biol* 1996, **263**:551-567
- Hudson PJ: **Recombinant antibody fragments.** *Curr Opin Biotechnol* 1998, **9**:395-402
- Kurokawa Y, Yanagi H, Yura T: **Overexpression of protein disulfide isomerase DsbC stabilizes multiple-disulfide-bonded recombinant protein produced and transported to the periplasm in *Escherichia coli*.** *Appl Environ Microbiol* 2000, **66**:3960-3965
- Kurokawa Y, Yanagi H, Yura T: **Overproduction of bacterial protein disulfide isomerase (DsbC) and its modulator (DsbD) markedly enhances periplasmic production of human nerve growth factor in *Escherichia coli*.** *J Biol Chem* 2001, **276**:14393-14399
- Trowbridge IS, Domigo DL: **Anti-transferin receptor monoclonal antibody and toxin-antibody conjugated affect growth of human tumor cells.** *Nature* 1981, **294**:171-173
- Masui H, Kawamoto T, Sato JD, Wolf B, Sato G, Mendelsohn J: **Growth inhibition of human tumor cells in athymic mice by anti-epidermal growth factor receptor monoclonal antibodies.** *Cancer Res* 1984, **44**:1002-1007
- Cuttitta F, Carney DN, Mulshine J, Moody TW, Fedorko J, Fischler A, Minna JD: **Bombesin-like peptides can function as autocrine growth factors in human small-cell lung cancer.** *Nature* 1985, **316**:823-826
- Tsumoto K, Shinoki K, Kondo H, Uchikawa M, Juji T, Kumagai I: **Highly efficient recovery of functional single-chain Fv fragments from inclusion bodies overexpressed in *Escherichia coli* by controlled introduction of oxidizing reagent - application to a human single-chain Fv fragment.** *J Immunol Methods* 1998, **219**:119-129

Publish with **BioMed Central** and every scientist can read your work free of charge

"BioMedcentral will be the most significant development for disseminating the results of biomedical research in our lifetime."

Paul Nurse, Director-General, Imperial Cancer Research Fund

Publish with **BMC** and your research papers will be:

- available free of charge to the entire biomedical community
- peer reviewed and published immediately upon acceptance
- cited in PubMed and archived on PubMed Central
- yours - you keep the copyright



BioMedcentral.com

Submit your manuscript here:

<http://www.biomedcentral.com/manuscript/>

[editorial@biomedcentral.com](mailto:editorial@biomedcentral.com)